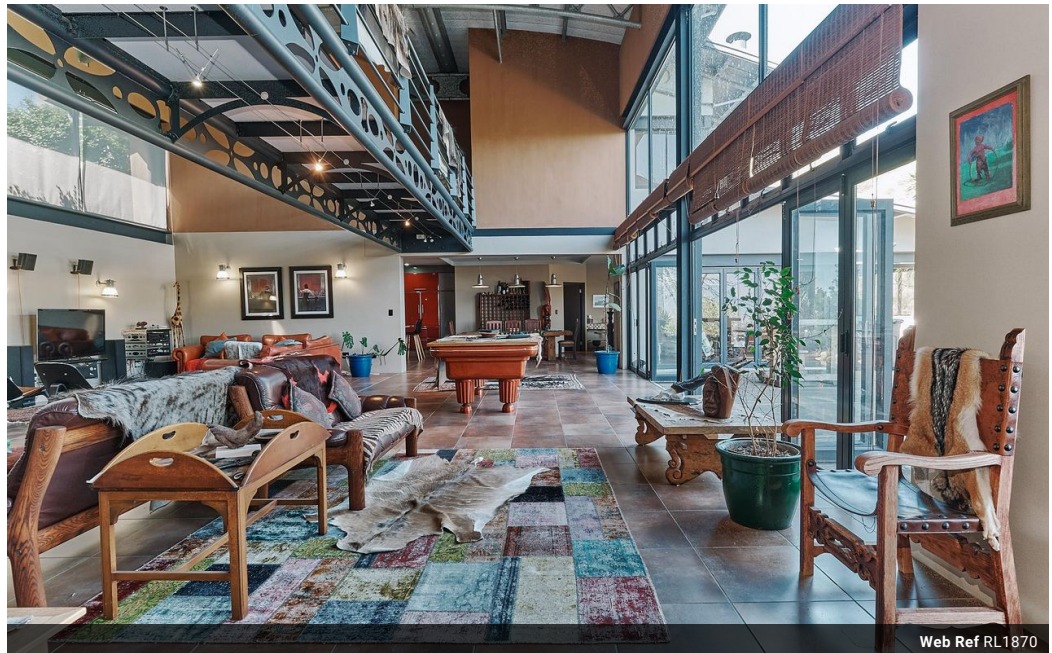




**Linduvuyo Matu**  
060 480 0057  
vuyo@urbanindex.co.za

Contact Head Office  
**021 007 5888**

Regus Office  
Willowbridge Centre  
Carl Cronje Drive  
Bellville  
7530



Web Ref RL1870



**R14,335,000**

4 4 2

**Monthly Bond Repayment** R147,964.21  
Calculated over 20 years at 11% with no deposit.

**Transfer Costs** R1,506,027.00 **Bond Costs** R108,535.00

These calculations are only a guide. Please ask your conveyancer for exact calculations.

**Monthly Levy** R1,980 **Monthly Rates** R6,300

### Living The Dream

Nestled within the highly coveted Baronetcy Estate, this exquisite home epitomizes luxury, comfort, and style. Boasting four spacious bedrooms, the upper level is thoughtfully designed to ensure both privacy and convenience for its residents. As you ascend the grand staircase, you'll find two ensuite bedrooms on one side, each equipped with a lavish combination of shower, bath, and twin sinks, promising a retreat of opulence and tranquility.

Crossing the charming bridge passageway to the opposite side of the upper level, you'll discover two additional well-appointed bedrooms and a family bathroom that features an inviting bath, a refreshing shower, and the added convenience of twin sinks, creating a haven for relaxation and rejuvenation.

The heart of this home lies on the ground floor, where a sprawling open-plan living...

### Features

**Pets Allowed** Yes

#### Interior

Bedrooms	4
Bathrooms	4
Kitchens	1
Recep. Rooms	2
Studies	1
Furnished	No

#### Exterior

Garages	2
Carports / Parkings	10
Security	Yes
Pool	No

#### Sizes

Land Size	968m <sup>2</sup>
-----------	-------------------