

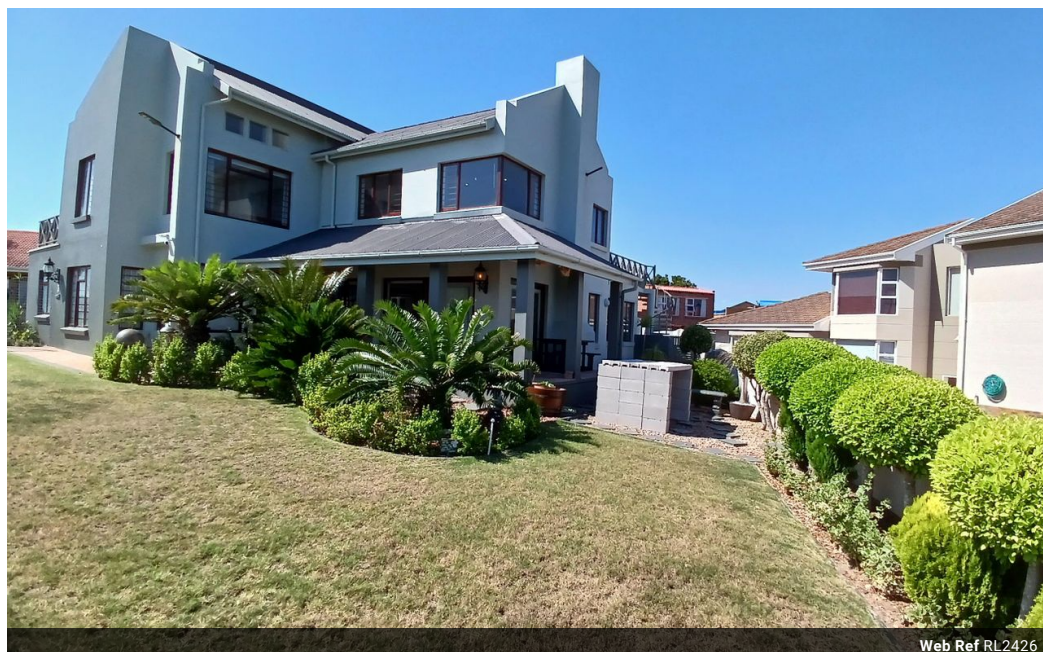


Isabel Koekemoer
084 359 0745
isabel@urbanindex.co.za

Contact Head Office

021 007 5888

Regus Office
Willowbridge Centre
Carl Cronje Drive
Bellville
7530



Web Ref RL2426



R6,250,000

🛏️ 4 🚿 3 🚗 2

Monthly Bond Repayment R64,511.77

Calculated over 20 years at 11% with no deposit.

Transfer Costs R551,266.00 **Bond Costs** R70,535.00

These calculations are only a guide. Please ask your conveyancer for exact calculations.

Monthly Rates R1,500

LOCATION! LOCATION!

In association with Midbrak property forum (mandate holder)

This beautiful dual living home is perfectly positioned with the most spectacular ocean views. This spacious home is perfect for the extended family.

This property offers:

GROUND LEVEL:

- 2 x single garages
- Double carport
- Ample paved parking space
- Flatlet with spacious bedroom and en-suite bathroom
- Modern open plan kitchen with granite tops
- Separate laundry
- Spacious dining and lounge area
- Small study/office space
- Braai room with built-in braai
- Guest toilet
- Undercover porch with stunning ocean views

Features

Pets Allowed		Exterior		Sizes	
Yes		Garages	2	Floor Size	515m ²
Interior		Carports / Parkings	2	Land Size	693m ²
Bedrooms	4	Security	Yes		
Bathrooms	3	Pool	No		
Kitchens	1				
Recep. Rooms	2				
Furnished	No				