



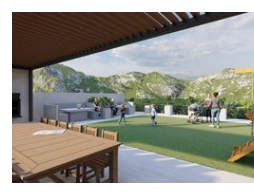
**Isabel Koekemoer**  
084 359 0745  
isabel@urbanindex.co.za

Contact Head Office  
**021 0075888**

Regus Office  
Willowbridge Centre  
Carl Cronje Drive  
Bellville  
7530



Web Ref RL1558



**R1,650,000**

2   2

**Monthly Bond Repayment** R17,031.11  
Calculated over 20 years at 11% with no deposit.

**Transfer Costs** R52,453.00   **Bond Costs** R30,875.00

These calculations are only a guide. Please ask your conveyancer for exact calculations.

**Monthly Levy** R825   **Monthly Rates** R825

**2 BEDROOMS LUXURY APARTMENT IN GEORGE CENTRAL THAT OFFERS INCOMPARABLE LIFESTYLE**

In Association with PropMove Properties.

Invest in your LIFESTYLE!!

Transfer Duty Free - buy direct from Developer at our launch price

NEO Victoria sets a new standard of apartment living in George, harmoniously combining design, energy efficiency, and quality finishes.

This apartment block offers an incomparable lifestyle and investment opportunity.

The building features iconic mountain views from many of the residences as well as impressive amenity spaces that will make you feel at home right away!

With perfectly manicured areas, peace of mind and comfort are at the heart of the building.

NEO Victoria is also a great investment as the rental market is driven by the recent and growing emigration.

**Features**

Interior		Exterior		Sizes	
Bedrooms	2	Carports / Parkings	1	Floor Size	64m <sup>2</sup>
Bathrooms	2	Pool	No		
Kitchens	1				
Recep. Rooms	2				
Furnished	No				