



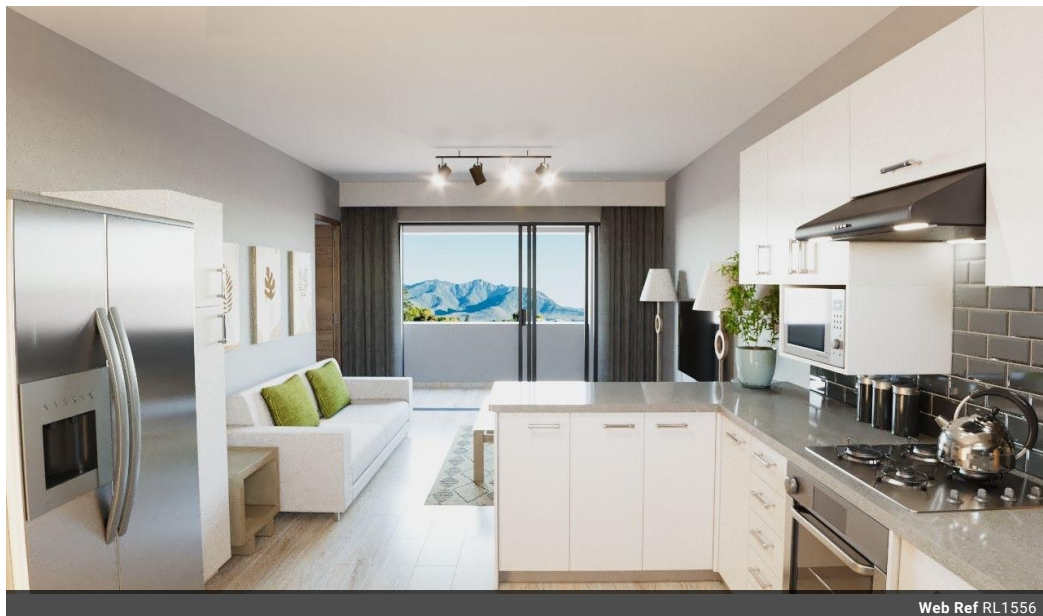
Isabel Koekemoer
084 359 0745
isabel@urbanindex.co.za

Contact Head Office

021 0075888

Regus Office
Willowbridge Centre
Carl Cronje Drive
Bellville
7530

1 Bedroom Apartment For Sale in Dormehls Drift



Web Ref RL1556



R1,200,000

 1  1

Monthly Bond Repayment R12,386.26

Calculated over 20 years at 11% with no deposit.

Transfer Costs R32,749.00 **Bond Costs** R25,220.00

These calculations are only a guide. Please ask your conveyancer for exact calculations.

Monthly Levy R682 **Monthly Rates** R600

1 BEDROOM LUXURY APARTMENT IN GEORGE CENTRAL THAT OFFERS INCOMPARABLE LIFESTYLE

In Association with PropMove Properties.

Invest in your LIFESTYLE!!

Transfer Duty Free - buy direct from Developer at our launch price

NEO Victoria sets a new standard of apartment living in George, harmoniously combining design, energy efficiency, and quality finishes.

This apartment block offers an incomparable lifestyle and investment opportunity.

The building features iconic mountain views from many of the residences as well as impressive amenity spaces that will make you feel at home right away!

With perfectly manicured areas, peace of mind and comfort are at the heart of the building.

NEO Victoria is also a great investment as the rental market is driven by the recent and growing immigration.

Features

Interior

Bedrooms	1
Bathrooms	1
Kitchens	1
Recep. Rooms	2
Furnished	No

Exterior

Carports / Parkings	1
Pool	No

Sizes

Floor Size	42m ²
------------	------------------