



Berenice Steyn
079 402 2468
berenice@urbanindex.co.za



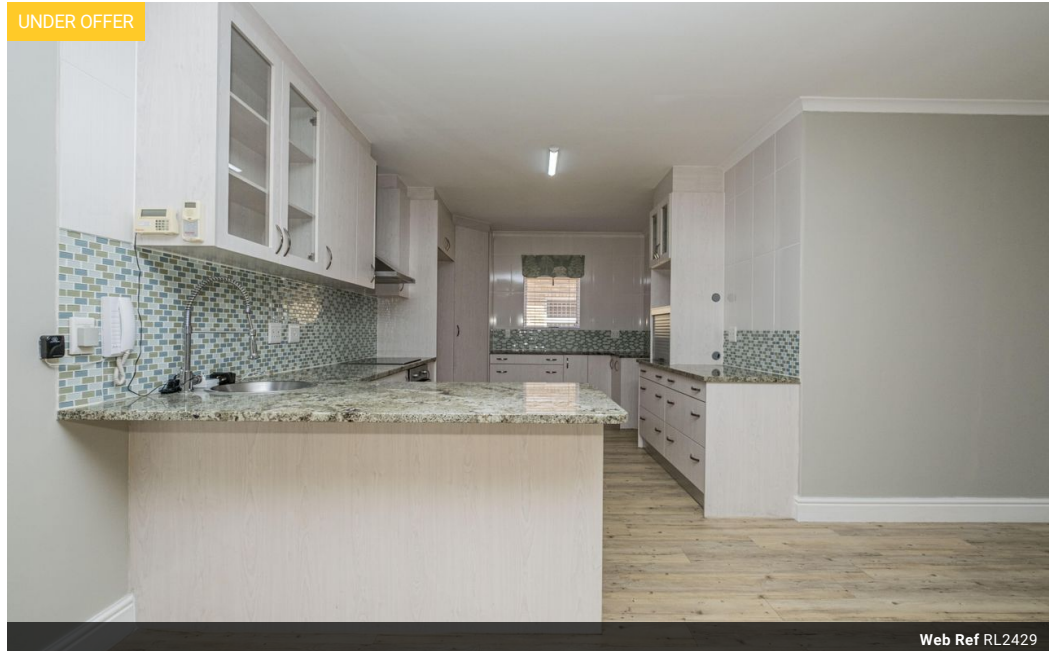
Fiona Beukes
082 287 5472
fiona@urbanindex.co.za

Contact Head Office

021 007 5888

Regus Office
Willowbridge Centre
Carl Cronje Drive
Bellville
7530

UNDER OFFER



Web Ref RL2429



R3,950,000

Monthly Bond Repayment R40,771.44
Calculated over 20 years at 11% with no deposit.

Transfer Costs R275,550.00 **Bond Costs** R51,610.00
These calculations are only a guide. Please ask your conveyancer for exact calculations.

Monthly Rates R1,239

🛏️ 3 🚿 2 🏠 2

One of the Largest Homes in Othello

EXCLUSIVE SOLE MANDATE -

This home features 3 bedrooms and 2 bathrooms, along with a guest toilet and basin.

The master bedroom has an en-suite bathroom with a wheelchair-friendly shower and a walk-in closet.

The second bedroom also has a full en-suite bathroom.

The other two bedrooms have built-in wardrobes.

The kitchen offers ample cupboard space and includes a separate scullery with a back door leading to the backyard. There is space for a washing machine and dishwasher.

The living room includes a built-in TV cabinet with a TV that will remain in place.

The house is equipped with a solar panel that powers the geyser, and wiring is in place for backup batteries to keep the lights, TV, and WiFi running during power outages.

Features

| Interior | | Exterior | | Sizes | |
|--------------|----|----------|-----|------------|-------------------|
| Bedrooms | 3 | Garages | 2 | Floor Size | 228m ² |
| Bathrooms | 2 | Security | Yes | Land Size | 638m ² |
| Kitchens | 1 | Pool | No | | |
| Recep. Rooms | 1 | | | | |
| Furnished | No | | | | |

