



Charlotte Bezuidenhout
076 942 3114
charlotte@urbanindex.co.za



Milly Rhooode
083 437 4510
milly@urbanindex.co.za

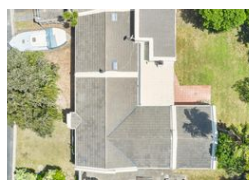
Contact Head Office

021 007 5888

Regus Office
Willowbridge Centre
Carl Cronje Drive
Bellville
7530



Web Ref RL1322



R3,195,000

Monthly Bond Repayment R32,978.42
Calculated over 20 years at 11% with no deposit.

Transfer Costs R183,829.00 **Bond Costs** R44,070.00

These calculations are only a guide. Please ask your conveyancer for exact calculations.



Charming 4-Bedroom Home in Flamingo Vlei Adjacent to Breathtaking Wetland Reserve

Discover your dream home in the charming suburb of Flamingo Vlei, Table View. This exquisite 4-bedroom property is situated adjacent to the breathtaking Rietvlei Wetland Reserve, a birdwatcher's utopia boasting 102 bird species.

Family fun is on the cards at the nearby Aquatic Club, with activities like mini-sailing, boating, windsurfing, and rowing available on the Rietvlei dam. The house itself features open-plan living spaces, with the lounge leading to a covered patio complete with a built-in braai for entertaining.

The kitchen is spacious and fitted with built-in cupboards and a stove and a full family bathroom completes the package. The main bedroom features an en-suite bathroom. The outside of the property is equally impressive, with a lush garden featuring a borehole system and a 50sqm double garage.

Security...

Features

Pets Allowed Yes

Interior	
Bedrooms	4
Bathrooms	2
Kitchens	1
Recep. Rooms	2
Studies	1
Furnished	No

Exterior	
Garages	2
Security	Yes
Pool	No

Sizes	
Floor Size	168m ²
Land Size	743m ²